

Personnel Qualifications and Training

William Singleton, DVM, DACLAM

Nov. 18, 2022



Goals for Education and Training and Programs

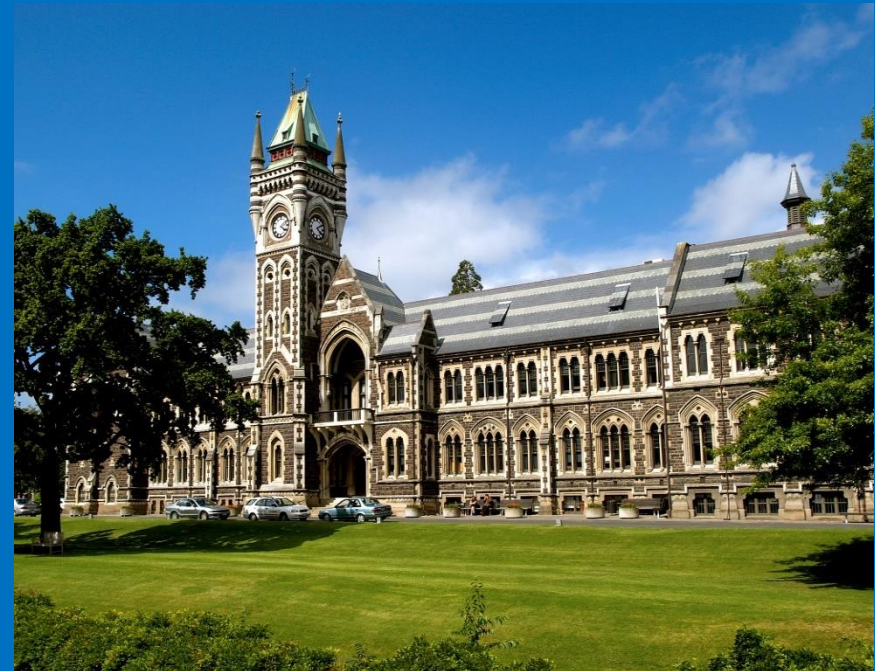
- Assure humane care and use of animals
- Produce good science
- Support efficient management of the animal care and use program
- Foster improved job satisfaction
- Promote public acceptance of animal research
- Uphold legal and regulatory requirements

Objectives for This Module

- Understand the IACUC's oversight responsibility for qualifications and training
- Understand the regulatory basis for training
- Identify training program components
- Review available training resources

Responsibility for Assuring that Personnel are Properly Trained

- The institution is ultimately responsible for assuring that personnel have adequate education, training and qualifications
- The IACUC must assess the training program at least every six months
- Supervisors are also accountable for competency



Who Receives Mandatory Training

Anyone who is responsible for animal care, treatment or use

- Research staff
 - scientists, visiting scientists, graduate students, research technicians, summer interns
- Animal Resources staff
 - animal care techs, supervisors, vet techs, veterinarians
- IACUC members

Optional Training

- Anyone entering the animal facilities:
 - maintenance personnel
 - vendors
 - contractors
- Every employee, regardless of job function?



Regulatory Training Requirements

- USDA Regulations

- humane methods of animal care and use
- methods that limit animal use
- methods that minimize animal distress and use of pain-relieving agents

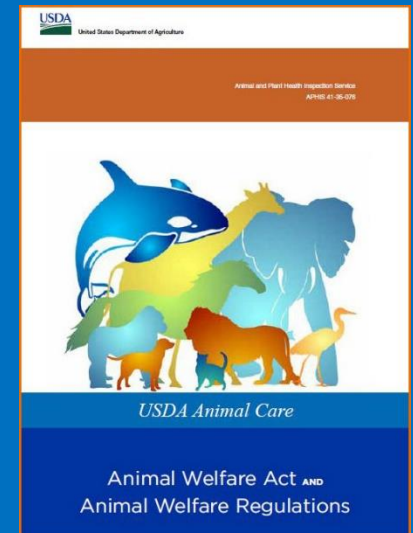
- PHS Policy

- humane methods of animal care and use
- methods that minimize the number of animals required
- methods that minimize animal distress

USDA Training Requirements

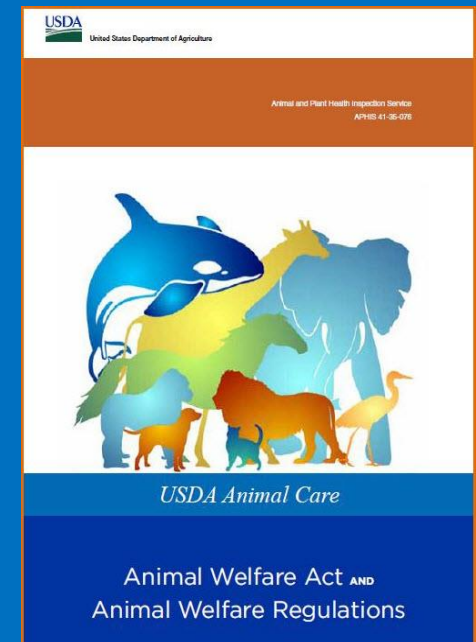
Humane methods of animal care and use

- basic needs of species
- proper handling and care
- proper surgical methods and procedures
- aseptic surgical technique



USDA Required Training

- Methods for reporting deficiencies in animal care and treatment
 - discrimination against or reprisal for reporting is forbidden
- Utilization of Information Services
 - Techniques and procedures
 - Alternatives to use of live animals
 - Prevent unnecessary duplication of research



PHS Policy

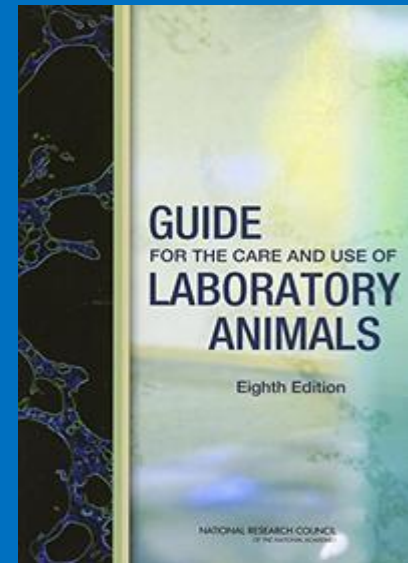
- OLAW assurance must include a synopsis of training or instruction



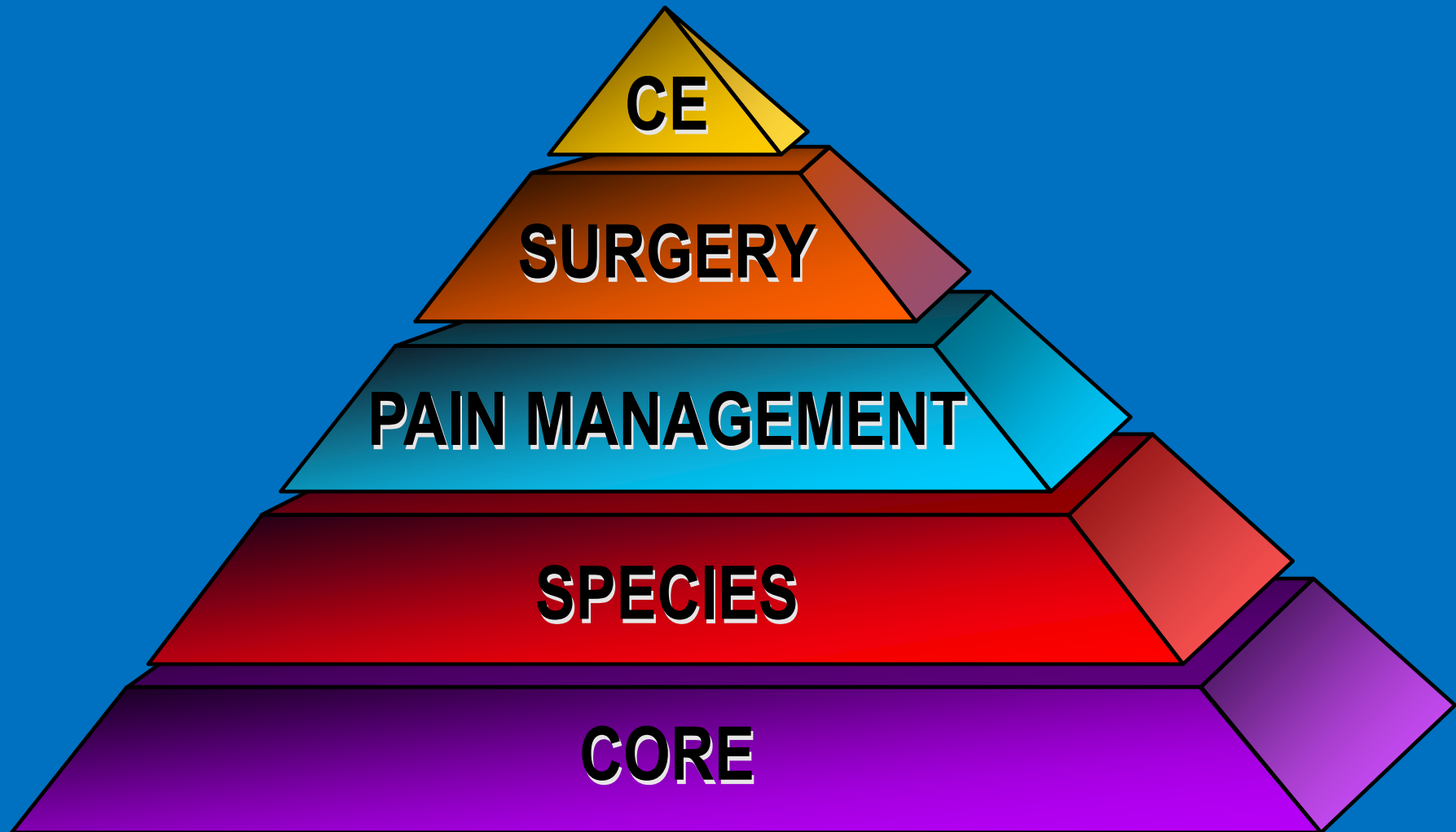
Office of Laboratory Animal Welfare

Guide for the Care and Use of Laboratory Animals

- All personnel involved with the care and use of animals must be adequately educated, trained, and/or qualified in basic principles of laboratory animal science
- The institution must provide suitable orientation, background materials, access to appropriate resources, and, if necessary, specific training to assist IACUC members
- Training should be documented (Yes or No)



Investigator Training Program Content



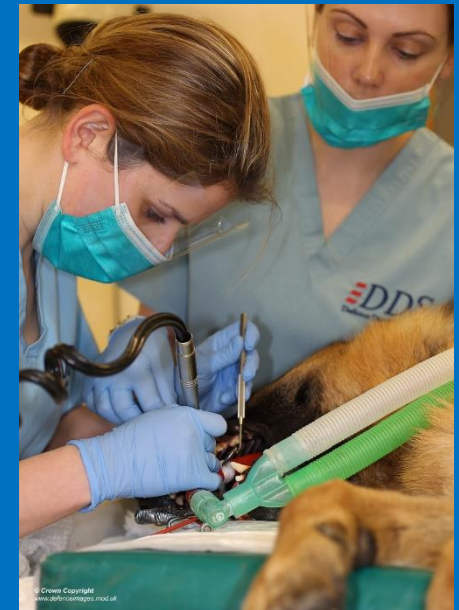
Core Module – For Investigators

- Laws, regulations and policies
- Ethical and scientific issues
- Responsibilities of the institution, IACUC, research staff and veterinarians
- Alternatives
- Pain and Distress Management
- Anesthesia and Analgesia



Core Module – Investigators

- Survival surgery and peri-operative care
- Euthanasia
- Basic husbandry expectations
- Resources
 - National Agricultural Library
 - National Library of Medicine



Facility Orientation

- Gowning and entry procedures
- Facility traffic flow
- Animal transport (in/out)
- Equipment storage
- Managing hazards and controlled substances
- Who to contact – in case of..

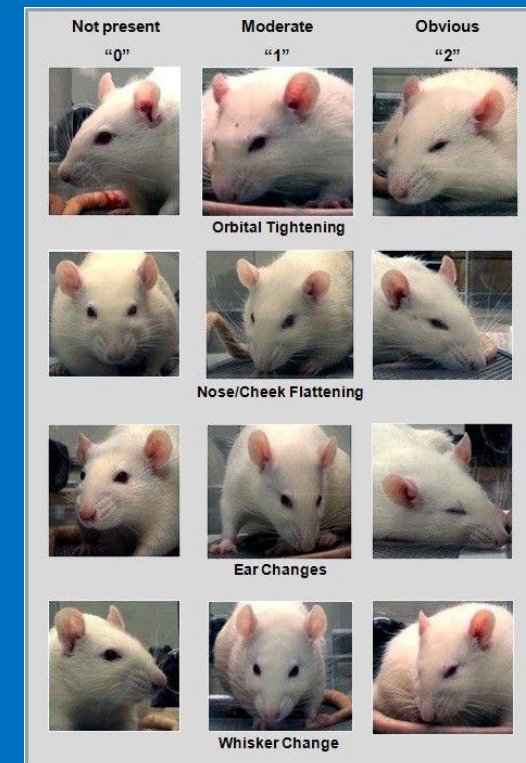


Training Resources for Research Staff

- Institute for Laboratory Animal Research/NAS
- Office of Laboratory Animal Welfare (OLAW)/NIH
- American Association for Laboratory Animal Science
- Canadian Council on Animal Care
- AAALAC, International
- CITI Program
- Academy for Surgical Research
- Laboratory Animal Welfare Training Exchange

Core Module—Animal Care Staff

- Animal husbandry
- Diet/Feeding
- Handling and restraint
- Animal behavior/health observations
- Sexing and breeding +/-
- Sanitation practices



Core Module—Animal Care Staff

- Facility sanitation
- Environmental monitoring
- Pest control
- Personal safety and hygiene
- Security
- Disaster response plan



Disaster Plan Training

- Research, Animal Resources, IACUC personnel
- Security, Physical Plant, Public Relations and Other Employees
- Potential Disasters
 - utility malfunctions
 - natural disasters (global pandemic, supply chain interruptions etc)
 - escaped animals
 - security issues—suspicious phone calls, break-ins

IACUC Training

- Orientation for new members
 - Overview of requirements and expectations
 - Provide copies of:
 - The Guide (including US Government Principles) and Ag Guide
 - Animal Welfare Act and USDA Regulations
 - PHS Policy and Institutional Assurance Statement
 - Institutional protocol form
 - IACUC policies and procedures
 - AAALAC Program Description
 - Review roles and responsibilities of the Attending Veterinarian, IACUC, IO and research personnel

IACUC Member Training

Are there other topics that are important for IACUC member training?

IACUC Training Resources

- IACUC 101, 201, 301—co-sponsored by OLAW
<http://iacuc101.org/courses>
- ICARE
https://grants.nih.gov/grants/olaw/interagency_icare.htm
- PRIM&R annual meeting
<http://www.primr.org>
- IACUC Advanced—sponsored by SCAW <http://www.scaw.com>
- Others

Training Resources for Animal Care Staff

- In-House Training Programs
- AALAS meetings (national and branch levels)
- AALAS certification programs
- Vet tech programs
- 3rd Party Training Organizations



Training Methods

- Lecture
- Printed materials
- Video, CD
- Web-based interactive CD
 - enables flexibility, tracking and control
- Wet labs or individual instruction for specialized techniques
- Discussion/problem or case-based learning
- Which of these is most effective?



[This Photo](#) by Unknown Author is licensed under [CC BY-SA-NC](#)

Methods for Evaluating Effectiveness of Training Programs

- Monitor the quality of the animal care and use program
 - document problem areas
 - evaluate trends
- Consult USDA inspection or AAALAC site visit reports
- Review post-approval monitoring findings
- Ask employees if training meets their needs

Methods for Evaluating the Qualifications of Personnel

- Observe individual performance outcomes
- Observe whether or not SOPs, research protocols are being followed
- Testing

Objectives for Today's Presentation

- Understand the regulatory basis for training
- Identify training program components
- Know what training resources are available

Acknowledgments and Thank You

Acknowledgments

- Americans for Medical Progress
- Molly Greene, Michigan State Univ.
- Lynn Anderson, Living her best life as a retiree

Characteristics of an Effective Education/Training (E/T) Program

- Material presented is relevant, timely, and practical
 - species-specific
 - task-specific
- Enables participants to perform their assigned tasks efficiently and effectively
- Positive effects of training are observable
- Training is evaluated and revised as needed

IACUC Training Resources

- On-line
 - OLAW on-line seminars
<http://grants.nih.gov/grants/olaw/olaw.htm>
 - AALAS Learning Library (ALL)
<http://www.aalaslearninglibrary.org>
 - AALAS list serve www.iacuc.org
- Publications
 - Journal of the American Association for Laboratory Animal Science <http://www.aalas.org/association/membership.aspx>
 - ILAR Journal, National Academy of Sciences
 - http://dels-old.nas.edu/ilar_n/ilarjournal/online_issues.shtml
- IACUC Administrators Association
 - <http://iacucaa.org/>